

IDEC

22mm YW Series Control & Signalling Units





UNIBODY PILOT LIGHTS - IP65

Features:

- Light weight construction.
- High Brightness LED.
- 42mm depth behind panel.
- Wide viewing lens angle.
- IP20 finger safe terminals.



FLUSH TYPE



DOME TYPE

UNIBODY PILOT LIGHTS

Voltage	Colour	Type	
		Part No.	Part No.
Unibody pilot lights with built-in LED			
12V AC/DC	Amber	-	YW1P-1BUQ3A
	Green	-	YW1P-1BUQ3G
	White	-	YW1P-1BUQ3PW
	Red	-	YW1P-1BUQ3R
	Blue	-	YW1P-1BUQ3S
	Yellow	-	YW1P-1BUQ3Y

Voltage	Colour	Type	
		Part No.	Part No.
Unibody pilot lights with built-in LED			
24V AC/DC	Amber	YW1P-2UQ4A	YW1P-1BUQ4A
	Green	YW1P-2UQ4G	YW1P-1BUQ4G
	White	YW1P-2UQ4PW	YW1P-1BUQ4PW
	Red	YW1P-2UQ4R	YW1P-1BUQ4R
	Blue	YW1P-2UQ4S	YW1P-1BUQ4S
	Yellow	YW1P-2UQ4Y	YW1P-1BUQ4Y

Voltage	Colour	Type	
		Part No.	Part No.
Unibody pilot lights with built-in LED			
100/110V AC	Amber	YW1P-2UQHA	YW1P-1BUQHA
	Green	YW1P-2UQHG	YW1P-1BUQHG
	White	YW1P-2UQHPW	YW1P-1BUQHPW
	Red	YW1P-2UQHR	YW1P-1BUQHR
	Blue	YW1P-2UQHS	YW1P-1BUQHS
	Yellow	YW1P-2UQHY	YW1P-1BUQHY

Voltage	Colour	Type	
		Part No.	Part No.
Unibody pilot lights with built-in LED			
230/240V AC	Amber	YW1P-2UQM3A	YW1P-1BUQM3A
	Green	YW1P-2UQM3G	YW1P-1BUQM3G
	White	YW1P-2UQM3PW	YW1P-1BUQM3PW
	Red	YW1P-2UQM3R	YW1P-1BUQM3R
	Blue	YW1P-2UQM3S	YW1P-1BUQM3S
	Yellow	YW1P-2UQM3Y	YW1P-1BUQM3Y

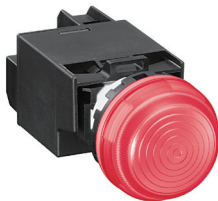
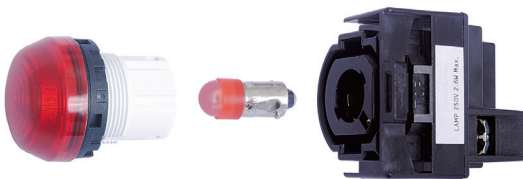
PILOT LIGHTS - IP65

Features:

- Compact light weight construction.
- IP20 finger safe terminals.
- High Brightness LED - low heat and long life.
- Matted lense surface to reduce light reflection.
- Wide viewing lens angle.



DOME PILOT LIGHT



DOME / TRANSFORMER PILOT LIGHT

PILOT LIGHTS (REPLACEMENT LAMP TYPE)

Voltage	Colour	DOME Part No.
DOME Type - LED LAMP included		
24V AC/DC	Amber	YW1P-2EQ4A
	Green	YW1P-2EQ4G
	Red	YW1P-2EQ4R
	Blue	YW1P-2EQ4S
	White	YW1P-2EQ4PW
	Yellow	YW1P-2EQ4Y

Voltage	Colour	Part No.
DOME Type - LAMP not included		
250V AC/DC from accessories	Amber	YW1P-2EQ0A
	Green	YW1P-2EQ0G
	Red	YW1P-2EQ0R
	Blue	YW1P-2EQ0S
	White	YW1P-2EQ0W
	Yellow	YW1P-2EQ0Y

PILOT LIGHTS (TRANSFORMER TYPE)

Voltage	Colour	Part No.
DOME Type - LED LAMP included		
230/240V AC (Transformer converts 230/240VAC to 6VAC)	Amber	YW1P-2EM42A
	Green	YW1P-2EM42G
	Red	YW1P-2EM42R
	Blue	YW1P-2EM42S
	White	YW1P-2EM42PW
	Yellow	YW1P-2EM42Y

Voltage	Colour	Part No.
DOME Type - LED LAMP included		
100/110V AC (Transformer converts 100/110VAC to 6VAC)	Amber	YW1P-2EH2A
	Green	YW1P-2EH2G
	Red	YW1P-2EH2R
	Blue	YW1P-2EH2S
	White	YW1P-2EH2PW
	Yellow	YW1P-2EH2Y



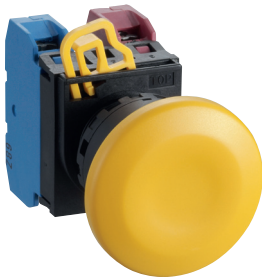
PUSHBUTTONS - IP65

Features:

- Compact light weight construction.
- IP20 finger safe terminals.
- Retained locking lever.
- Reliable self-cleaning contacts.
- Up to 6 contacts possible on non-ill. units (3x double contact blocks).
- Up to 4 contacts possible on ill. units (2x double contact blocks).



FLUSH PUSHBUTTON



40mm MUSHROOM PUSHBUTTON



ILLUMINATED 40mm MUSHROOM

PUSHBUTTON - FLUSH TYPE

Operation	Contact	Colour	Part No.
NON-illuminated			
Momentary	1NO	Black	YW1B-M1E10B
	1NO	Green	YW1B-M1E10G
	1NC	Red	YW1B-M1E01R
	1NO	Red	YW1B-M1E10R
	1NO	Blue	YW1B-M1E10S
	1NO	White	YW1B-M1E10W
	1NO	Yellow	YW1B-M1E10Y

Operation	Contact	Colour	Part No.
NON-illuminated			
Maintained	1NO	Black	YW1B-A1E10B
	1NO	Green	YW1B-A1E10G
	1NO	Red	YW1B-A1E10R
	1NO	Blue	YW1B-A1E10S
	1NO	White	YW1B-A1E10W
	1NO	Yellow	YW1B-A1E10Y

PUSHBUTTON - 40mm MUSHROOM HEAD

Operation	Contact	Colour	Part No.
NON-illuminated			
Momentary	1NO	Black	YW1B-M4E10B
	1NO	Green	YW1B-M4E10G
	1NO	Red	YW1B-M4E10R
	1NC	Red	YW1B-M4E01R
	1NO	Blue	YW1B-M4E10S
	1NO	Yellow	YW1B-M4E10Y

Operation	Contact	Colour	Part No.
ILLUMINATED - LAMP Not included*			
Momentary	1NO	Amber	YW1L-M4E10Q0A
	1NO	Green	YW1L-M4E10Q0G
	1NO	Red	YW1L-M4E10Q0R
	1NO	Blue	YW1L-M4E10Q0S
	1NO	Yellow	YW1L-M4E10Q0Y

*Select BA9S lamp up to 250V AC/DC from accessories.

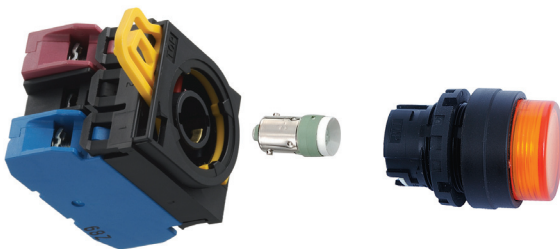
PUSHBUTTONS - IP65

Features:

- Compact light weight construction.
- IP20 finger safe terminals.
- Retained locking lever.
- Reliable self-cleaning contacts.
- Up to 4 contacts possible on ill. units (2x double contact blocks).



EXTENDED PUSHBUTTON



FULL SHROUD PUSHBUTTON

ILLUMINATED PUSHBUTTON - EXTENDED

Voltage	Contact	Colour	Part No.
LED LAMP INCLUDED			
24V AC/DC	1NO+1NC	Amber	YW1L-M2E11Q4A
		Green	YW1L-M2E11Q4G
		Red	YW1L-M2E11Q4R
		Blue	YW1L-M2E11Q4S
		White	YW1L-M2E11Q4PW
		Yellow	YW1L-M2E11Q4Y

Voltage	Contact	Colour	Part No.
LED LAMP INCLUDED			
230/240V AC	1NO+1NC	Amber	YW1L-M2E11QM3A
		Green	YW1L-M2E11QM3G
		Red	YW1L-M2E11QM3R
		Blue	YW1L-M2E11QM3S
		White	YW1L-M2E11QM3PW
		Yellow	YW1L-M2E11QM3Y

ILLUMINATED PUSHBUTTON - FULL SHROUD

Voltage	Contact	Colour	Part No.
LED LAMP INCLUDED			
24V AC/DC	1NO+1NC	Amber	YW1L-MF2E11Q4A
		Green	YW1L-MF2E11Q4G
		Red	YW1L-MF2E11Q4R
		Blue	YW1L-MF2E11Q4S
		White	YW1L-MF2E11Q4PW
		Yellow	YW1L-MF2E11Q4Y

Voltage	Contact	Colour	Part No.
LED LAMP INCLUDED			
230/240V AC	1NO+1NC	Amber	YW1L-MF2E11QM3A
		Green	YW1L-MF2E11QM3G
		Red	YW1L-MF2E11QM3R
		Blue	YW1L-MF2E11QM3S
		White	YW1L-MF2E11QM3PW
		Yellow	YW1L-MF2E11QM3Y



SELECTOR SWITCHES - IP65

Features:

- Compact light weight construction.
- IP20 finger safe terminals.
- Retained locking lever.
- Up to 6 contacts possible on non-ill. units (3x double contact blocks).



SELECTOR SWITCH



KEY SELECTOR SWITCH



E-STOP - NON-ILLUMINATED



E-STOP STATION

SELECTOR SWITCH

Operation	Contact	Part No.
2 POSITION		
Maintained	1NO	YW1S-2E10
Spring return from Right	1NO	YW1S-21E10

Operation	Contact	Part No.
3 POSITION		
Maintained	2NO	YW1S-3E20
Spring return from Right	2NO	YW1S-31E20
Spring return from Left	2NO	YW1S-32E20
Spring return two way	2NO	YW1S-33E20

KEY SELECTOR SWITCH

Operation	Contact	Part No.
KEY, 2 POSITION		
Maintained	1NO+1NC	YW1K-2AE11
Spring return from Right	1NO+1NC	YW1K-21BE11

Operation	Contact	Part No.
KEY, 3 POSITION		
Maintained	2NO	YW1K-3AE20
Spring return from Right	2NO	YW1K-31BE20
Spring return from Left	2NO	YW1K-32CE20
Spring return two way	2NO	YW1K-33DE20

EMERGENCY STOP - PUSHLOCK, PULL/TURN RESET 40mm Mushroom Head Pushbutton

Contact	Part No.
NON - Illuminated - Colour RED	
1NC	YW1B-V4E01R

LED Voltage	Contact	Part No.
Illuminated - Colour RED		
24V AC/DC	1NC	YW1L-V4E01Q4R
230/230 VAC	1NC	YW1L-V4E01QM3R

EMERGENCY STOP STATION

Contact	Part No.
NON - Illuminated, Pushlock, Pull/Turn Reset - Colour RED	
1NC	FB-YW-V4E01-HWAV

E-Stop label included.

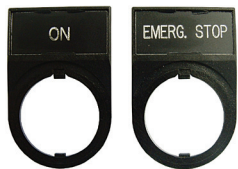
ACCESSORIES



CONTACT BLOCK



LSED LAMP



HWAM LEGEND



E-STOP LEGEND



PADLOCK COVER



E-STOP SHROUD



DIN RAIL ADAPTOR

ACCESSORIES

Contact Blocks	Part No.
1NO	YW-E10
1NC	YW-E01
1NO+1NC - double contact block	YW-EW11
2NO - double contact block	YW-EW20
2NC - double contact block	YW-EW02

LED Lamps (BA9S)

6V AC/DC	LSED-6
12V AC/DC	LSED-1
24V AC/DC	LSED-2
110V AC/DC	LSED-H
230/240V AC	LSED-M3

□ G - Green, R - Red, S - Blue, PW -White, Y - Yellow, A - Amber

Legend Plates

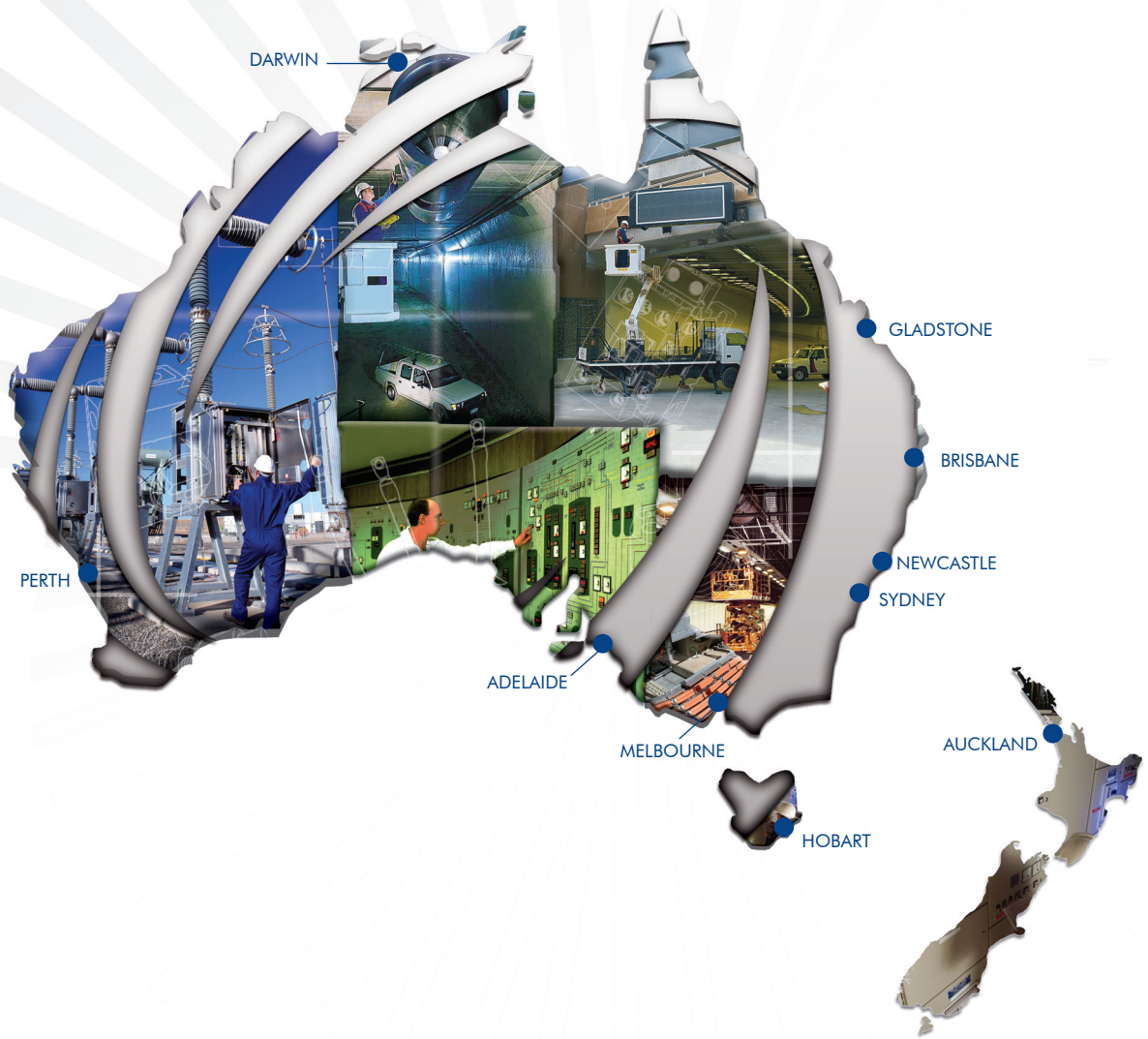
Blank	HWAM-OB
Auto	HWAM-101
Close	HWAM-102
Emergency stop	HWAM-104
Forward	HWAM-106
Off	HWAM-114
On	HWAM-115
Reverse	HWAM-120
Start	HWAM-123
Stop	HWAM-125
Auto-Man	HWAM-201
Off-On	HWAM-212
On-Off	HWAM-213
Hand-Auto	HWAM-206
Run-Jog	HWAM-217
Start-Stop	HWAM-221
Auto-Man-Off	HWAM-301
Auto-Off-Man	HWAM-302
Hand-Off-Auto	HWAM-317

For other legends please contact IPD.

Emergency Stop Name Plate (yellow) - Ø60mm	HWAV-27
--	---------

Miscellaneous

Padlock cover	HW9Z-KL1
Din rail adaptor	P9DINRA
E-stop shroud	HW9Z-KG3



QR Code
Scan the code above with a smartphone to view the full IPD product range



National Customer Support Centre
Tel: 1300 556 601 Fax: 1300 550 187
Email: customerservice@ipdgroup.com.au
www.ipdgroup.com.au



Quality Endorsed Company
AS/NZS 9001:2008
QEC 0228
SAI Global