



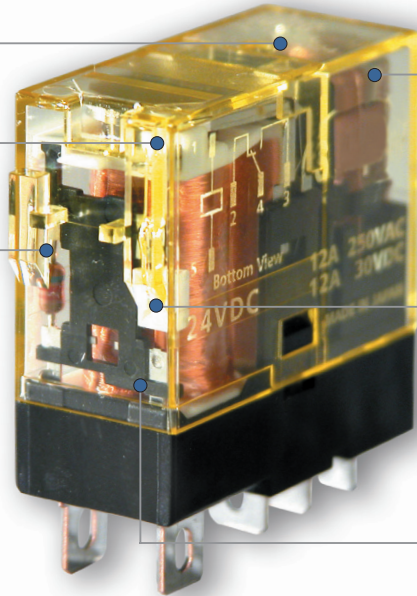
## GENERAL PURPOSE RELAYS



Compact width saves DIN rail space

Light guide optimizes visibility of power status

Hold down tabs designed for most sockets



High contact rating switches up to 12 amps

Non-polarized, green LED (conforming to IEC requirements for non-hazardous situations) indicates power status

Spot welding technology eliminates lead, the need for internal jumper wires, and solder joints

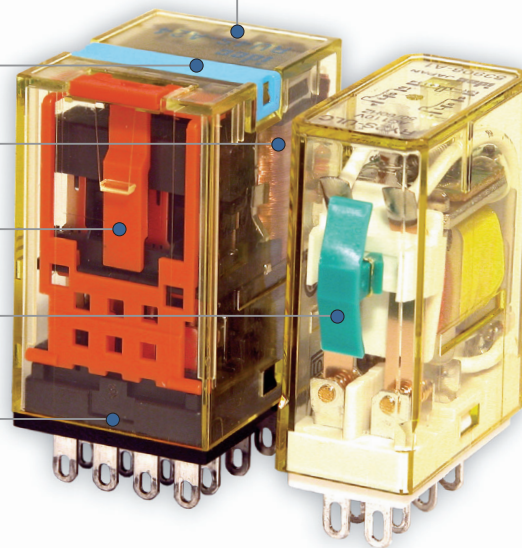
Non-polarized, green LED (conforming to IEC requirements for non-hazardous situations) indicates power status

Color marking plates allow you to organize your control panel

Spot welding technology eliminates lead, the need for internal jumper wires, and solder joints

Color check button differentiates AC and DC coils

100% robotic assembly ensures quality and precision

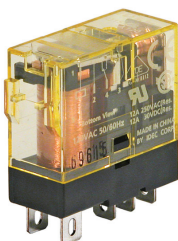


# IDEC

## SLIM-LINE POWER RELAYS

### Key Features:

- Compact and rugged relays. Large switching capacity.
- Compact housing 12.7mm wide.
- Large contact rating.
- RJ1 (1 - pole): 16 Amps.
- RJ2 (2 - pole) 8 Amps.
- Non - polarized LED.
- Excellent electrical life.
- Electrical life: 200,000 operation (AC load).
- Mechanical life: 30 million operation (AC coil).
- Contact Material: Silver - Nickel alloy.

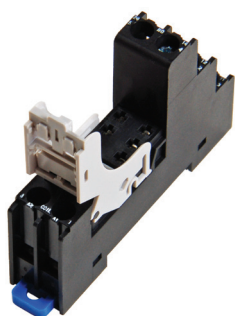


RJ1S-1PDT



RJ2S-2PDT

Finger - safe DIN Rail Mount



BASES



RJ SERIES JUMPER

### RJ SERIES - 1 POLE

Coil Voltage	Part No.
24VAC	RJ1S-CL-A24
110VAC	RJ1S-CL-A110
240VAC	RJ1S-CL-A240
12VDC	RJ1S-CL-D12
24VDC	RJ1S-CL-D24
24VDC with diode	RJ1S-CLD-D24
48VDC with diode	RJ1S-CLD-D48
110VDC	RJ1S-CL-D110

with LED indicator

### RJ SERIES - 2 POLE

Coil Voltage	Part No.
24VAC	RJ2S-CL-A24
110VAC	RJ2S-CL-A110
240VAC	RJ2S-CL-A240
12VDC	RJ2S-CL-D12
24VDC	RJ2S-CL-D24
110VDC	RJ2S-CL-D110
24VDC with diode	RJ2S-CLD-D24
48VDC with diode	RJ2S-CLD-D48

with LED indicator

### ACCESSORIES

Bases	Part No.
Base for RJ1 (5pin)	SJ1S-07LW
Base for RJ2 (8pin)	SJ2S-07LW

RJ Series Jumper	Part No.
2 WAY	SJ9Z-JF2PN1
5 WAY	SJ9Z-JF5PN1
8 WAY	SJ9Z-JF8PN1
10 WAY	SJ9Z-JF10PN1

Note:

All RJ series relays have built-in LED indicator.



## UNIVERSAL RELAYS

### Key Features:

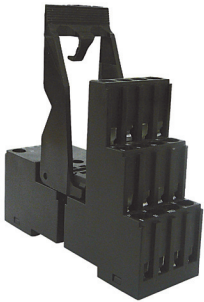
- Full featured universal miniature relays.
- Designed with environment taken into consideration.
- Two terminal styles: plug-in and PCB mount.
- Non-polarized LED indicator.
- No internal wires, lead-free construction.
- Cadmium-free contacts.
- Mechanical flag indicator.
- Manual latching lever with colour coding for AC or DC coil.
- Snap-on yellow marking plate; optional marking plates are available in four other colours.
- Maximum contact ratings: 10A (RU2), 6A (RU4).



RU2S-2PDT



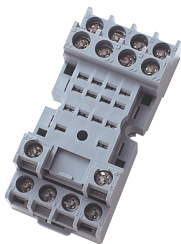
RU4S-4PDT



SY4S-05E1G2



SY9Z-CB-PYF-5



SY4S-05C

### RU SERIES - 2 POLE

Coil		Part No.
Voltage		
24VAC		<b>RU2S-A24</b>
110VAC		<b>RU2S-A110</b>
240VAC		<b>RU2S-A220</b>
12VDC		<b>RU2S-D12</b>
24VDC		<b>RU2S-D24</b>
48VDC		<b>RU2S-D48</b>
110VDC		<b>RU2S-D110</b>

with LED indicator

### RU SERIES - 4 POLE

Coil		Part No.
Voltage		
24VAC		<b>RU4S-A24</b>
110VAC		<b>RU4S-A110</b>
240VAC		<b>RU4S-A220</b>
12VDC		<b>RU4S-D12</b>
24VDC		<b>RU4S-D24</b>
48VDC		<b>RU4S-D48</b>
110VDC		<b>RU4S-D110</b>
24VDC	with diode	<b>RU4S-D-D24</b>
48VDC	with diode	<b>RU4S-D-D48</b>

with LED indicator

### ACCESSORIES

Bases	Part No.
2 / 4 Pole (14 pin)	<b>SY4S-05E1G2</b>

with separate coil & contact terminals.

Jumper	Part No.
5 way	<b>SY9Z-CB-PYF-5</b>

Bases	Part No.
Base for RU2S (8 pin)	<b>SM2S-05C</b>
Base for RU4S (14 pin)	<b>SY4S-05C</b>

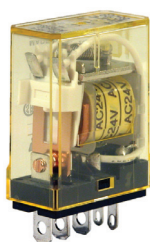
Note:

All RU series relays have built-in LED indicator and manual latching lever.

## COMPACT POWER RELAYS

### Key Features:

- SPDT through 4PDT, 10A contacts.
- Compact power type relays.
- 10A contact capacity.
- Compact size saves space.



RH1B-1PDT



RH2B-2PDT

### RH SERIES - 1 POLE

Coil Voltage		Part No.
12VAC		<b>RH1B-UAC12</b>
24VAC		<b>RH1B-UAC24</b>
110VAC		<b>RH1B-UAC110</b>
240VAC		<b>RH1B-UAC240</b>
6VDC		<b>RH1B-UDC6</b>
12VDC		<b>RH1B-UDC12</b>
24VDC		<b>RH1B-UDC24</b>
32VDC		<b>RH1B-UDC32</b>
48VDC		<b>RH1B-UDC48</b>
110VDC		<b>RH1B-UDC110</b>
12VDC	with LED indicator	<b>RH1B-ULDC12</b>
110VAC	with LED indicator	<b>RH1B-ULAC110</b>
110VDC	with LED indicator	<b>RH1B-ULDC110</b>
240V AC	with LED indicator	<b>RH1B-ULAC240</b>
12VAC	with LED indicator	<b>RH1B-ULAC12</b>
24VAC	with LED indicator	<b>RH1B-ULAC24</b>
24VDC	with LED indicator	<b>RH1B-ULDC24</b>
48VDC	with LED indicator	<b>RH1B-ULDC48</b>
24VDC	with diode & LED	<b>RH1B-ULD-DC24</b>

### RH SERIES - 2 POLE

6VAC		<b>RH2B-UAC6</b>
24VAC		<b>RH2B-UAC24</b>
32VAC		<b>RH2B-UAC32</b>
50VAC		<b>RH2B-UAC50</b>
110VAC		<b>RH2B-UAC110-120</b>
240VAC		<b>RH2B-UAC220-240</b>
12VDC		<b>RH2B-UDC12</b>
24VDC		<b>RH2B-UDC24</b>
32VDC		<b>RH2B-UDC32</b>
48VDC		<b>RH2B-UDC48</b>
110VDC		<b>RH2B-UDC100-110</b>
110VAC	with LED indicator	<b>RH2B-ULAC110</b>
24VAC	with LED indicator	<b>RH2B-ULAC24</b>
24VAC	with LED indicator	<b>RH2B-ULAC240</b>
24VDC	with LED indicator	<b>RH2B-ULDC24</b>
125VDC	with LED indicator	<b>RH2B-ULDC125</b>
12VDC	with diode	<b>RH2B-UD-DC12</b>
24VDC	with diode	<b>RH2B-UD-DC24</b>
48VDC	with diode	<b>RH2B-UD-DC48</b>
110VDC	with diode	<b>RH2B-UD-DC110</b>
110VDC	with diode & LED	<b>RH2B-ULD-DC110</b>
12VDC	with diode & LED	<b>RH2B-ULD-DC12</b>
125VDC	with diode & LED	<b>RH2B-ULD-DC125</b>
24VDC	with diode & LED	<b>RH2B-ULD-DC24</b>
48VDC	with diode & LED	<b>RH2B-ULD-DC48</b>

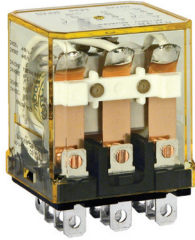
Relay bases on next page...



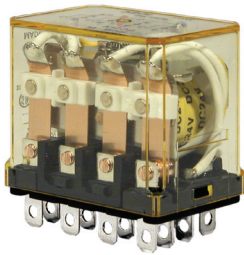
## COMPACT POWER RELAYS

### Key Features:

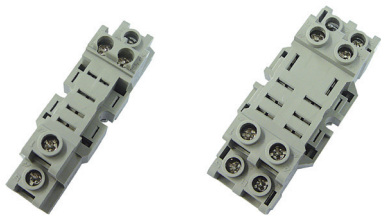
- SPDT through 4PDT, 10A contacts.
- Compact power type relays.
- 10A contact capacity.
- Compact size saves space.



RH3B-3PDT



RH4B-4PDT



SH1B-05C

SH2B-05C



SH3B-05C

### RH SERIES - 3 POLE

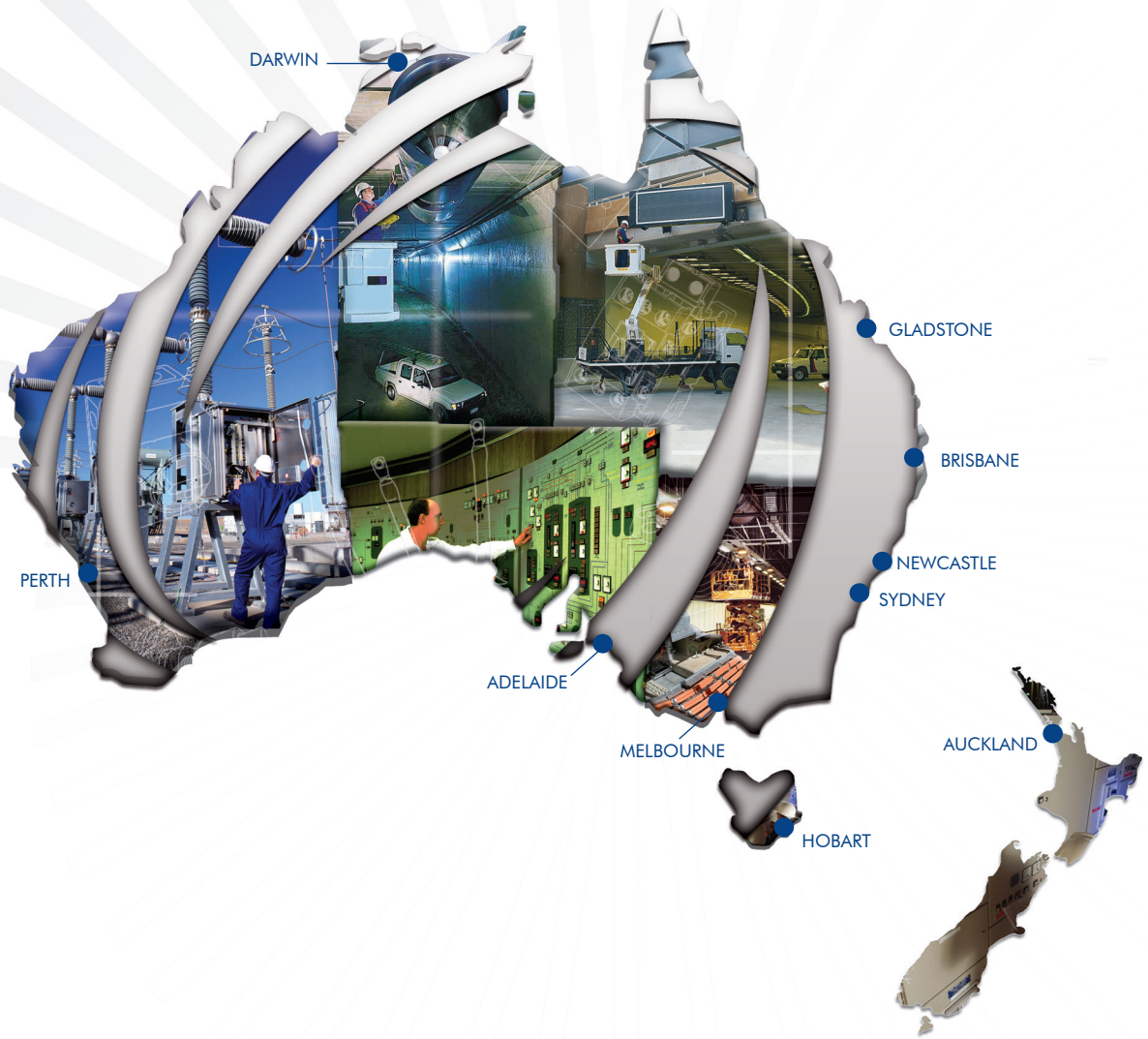
Coil		Part No.
Voltage		
24VAC		<b>RH3B-UAC24</b>
110VAC		<b>RH3B-UAC110</b>
240VAC		<b>RH3B-UAC240</b>
12VAC		<b>RH3B-UAC12</b>
12VDC		<b>RH3B-UDC12</b>
24VDC		<b>RH3B-UDC24</b>
32VDC		<b>RH3B-UDC32</b>
48VDC		<b>RH3B-UDC48</b>
110VDC		<b>RH3B-UDC110</b>
24VAC	with LED indicator	<b>RH3B-ULAC24</b>
48VAC	with LED indicator	<b>RH3B-ULAC48</b>
110VAC	with LED indicator	<b>RH3B-ULAC110</b>
240VAC	with LED indicator	<b>RH3B-ULAC240</b>
110VDC	with LED indicator	<b>RH3B-ULDC110</b>

### RH SERIES - 4 POLE

24VAC		<b>RH4B-UAC24</b>
120VAC		<b>RH4B-UAC120</b>
240VAC		<b>RH4B-UAC240</b>
12VDC		<b>RH4B-UDC12</b>
24VDC		<b>RH4B-UDC24</b>
32VDC		<b>RH4B-UDC32</b>
48VDC		<b>RH4B-UDC48</b>
110VDC		<b>RH4B-UDC110</b>
12VDC	with LED indicator	<b>RH4B-ULDC12</b>
24VDC	with LED indicator	<b>RH4B-ULDC24</b>
24VAC	with LED indicator	<b>RH4B-ULAC24</b>
110VAC	with LED indicator	<b>RH4B-ULAC110</b>
125VDC	with LED indicator	<b>RH4B-ULDC125</b>
240VAC	with LED indicator	<b>RH4B-ULAC240</b>

Bases	Part No.
Base for RH1B (5 pin)	<b>SH1B-05C</b>
Base for RH2B (8 pin)	<b>SH2B-05C</b>
Base for RH3B (11 pin)	<b>SH3B-05C</b>
Base for RH4B (14 pin)	<b>SH4B-05C</b>





QR Code  
Scan the code above with a smartphone to view the full IPD product range



National Customer Support Centre  
Tel: 1300 556 601 Fax: 1300 550 187  
Email: [customerservice@ipdgroup.com.au](mailto:customerservice@ipdgroup.com.au)  
[www.ipdgroup.com.au](http://www.ipdgroup.com.au)



Quality Endorsed Company  
AS/NZS 9001:2008  
QEC 0228  
SAI Global