



GRID PROTECTION



-  Standalone Relays
-  Fully assembled grid protection systems
-  Protection Cubicles
-  Accessories



Is your Grid protection system compliant to AS 4777 requirements?

DISTRIBUTION NETWORK SERVICE PROVIDER (DNSP) INSIST ON CERTIFIED PROTECTION RELAYS

When making an application to connect (if your system is above 30kW three phases or 10kW single phase), the Distribution Network Service Provider (DNSP) will insist on secondary protection to be provided. This will be in addition to the in-built protection offered by AS4777 compliant inverters. They will insist that the protection relay shall be certified.

IPD offers you a complete range of Anti Islanding Relays and Fully assembled Grid protection systems. Our complete product range complies with the latest AS/NZS 4777 standards.



PRODUCT RANGE

All products compliant to AS 4777 requirements

RELAYS

Standalone Protection Relays



PROTECTION CUBICLES

Decentralized protection systems



FULLY ASSEMBLED GRID PROTECTION SYSTEMS



FULLY ASSEMBLED GRID PROTECTION SYSTEMS

With integrated combiner section



STANDALONE RELAYS

MAINSPRO

VOLTAGE BASED

Are you generating power in parallel to the mains?

You will need 'loss of mains' protection. Essential to avoid supplying your electricity into an islanded grid, leading to possible equipment damage or safety issues.



Protective functionality	ANSI
Overtoltage	59
Under voltage	27
Over Frequency	81H
Under Frequency	81L
Voltage Unbalance	47
Vector Shift	78
ROCOF	81R

INTELIPROPV

CURRENT & VOLTAGE BASED

You need IntelliPro PV for Photovoltaic systems connected to the utility grid, where export limitation or reverse power protection is required.

InteliPro PV has the data communications functionality and multiple protocol options are also available.



Export limitation and reverse power protection as standard. Other communication options available (RS232 standard).

Protective functionality	ANSI
Under/overtoltage and asymmetry (two stage setting)	27, 59, 47
Overfrequency, Underfrequency (two stage setting)	81H, 81L
Instantaneous over current	50
Time over current	51
Current asymmetry	46
Earth fault current	50N + 51N
Ground surge current	50GS + 51GS
Directional/Reverse power with time delay	32
Neutral voltage displacement	59N
Vector shift	78
Rate of change of frequency + rocof filter	81R
Auto fault reset	
Maximum parallel time	
Analog and binary inputs related protections	
Battery voltage protection	
Breaker failure	

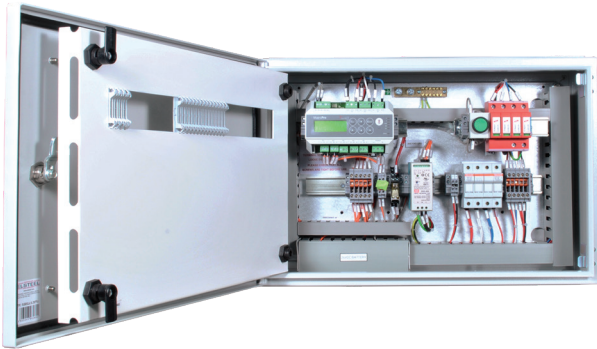


PROTECTION CUBICLES

Decentralized protection systems

MAINSCUBE

VOLTAGE BASED



Part Number	Dimensions (HxWxD)
MAINSCUBE	400 x 600 x 200

INTELICUBE

CURRENT & VOLTAGE BASED



Export limitation and reverse power protection as standard. Other communication options available (RS232 standard).

Part Number	Dimensions (HxWxD)
INTELICUBE	400 x 600 x 200

*Current Transformers to be ordered separately

Features

- Surge Protection.
- One hour battery backup as standard.
- Modular enclosure.
- Full size gland plate top and bottom.
- IP43 rated.
- Full powder coated mildsteel.
- Stainless Steel 316 option available (made to order).
- Voltage: 230/400 VAC

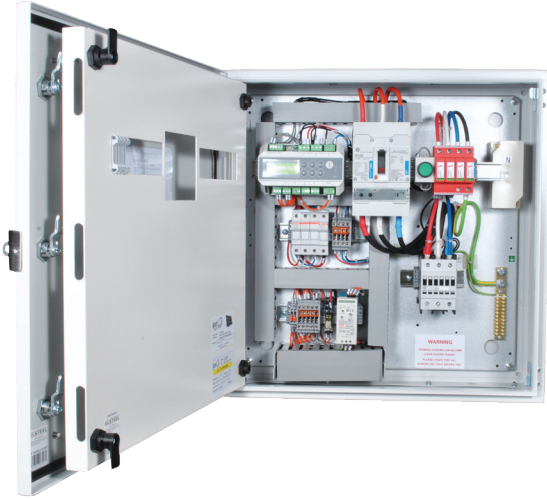
Technology partners :



FULLY ASSEMBLED GRID PROTECTION SYSTEMS

MAINS-PRO-based Assemblies

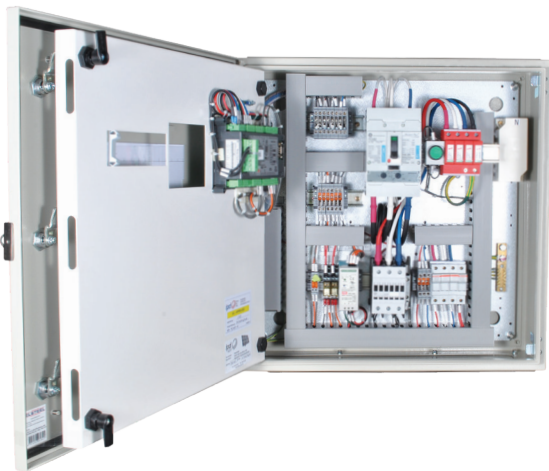
VOLTAGE BASED



Part Number	kVA	Current	Dimensions (HxWxD)
PVMGPS4P69	69	100A AC1	600 x 600 x 200
PVMGPS4P110	110	160A AC1	600 x 600 x 300
PVMGPS4P173	173	250A AC1	800 x 600 x 300
PVMGPS4P277	277	400A AC1	1200 x 600 x 300
PVMGPS4P436	436	630A AC1	1200 x 600 x 300

INTELIPROPV-based Assemblies

CURRENT & VOLTAGE BASED



Export limitation and reverse power protection as standard.
Other communication options available (RS232 standard).

Part Number	kVA	Current	Dimensions (HxWxD)
PVIGPS4P69M	69	100A AC1	600 x 600 x 200
PVIGPS4P110M	110	160A AC1	600 x 600 x 300
PVIGPS4P173M	173	250A AC1	800 x 600 x 300
PVIGPS4P277M	277	400A AC1	1200 x 600 x 300
PVIGPS4P436M	436	630A AC1	1200 x 600 x 300

Features

- Modular enclosure for easy connection between combiner box and grid protection system. IP43 rated.
- Fully rated neutral bar.
- Full size gland plate top and bottom.
- One hour battery backup as standard.
- Full powder coated mildsteel.
- Stainless Steel 316 option available (made to order).
- Fault rated : 50kARMS
- Voltage : 230/400VAC

Technology partners :



Distributor

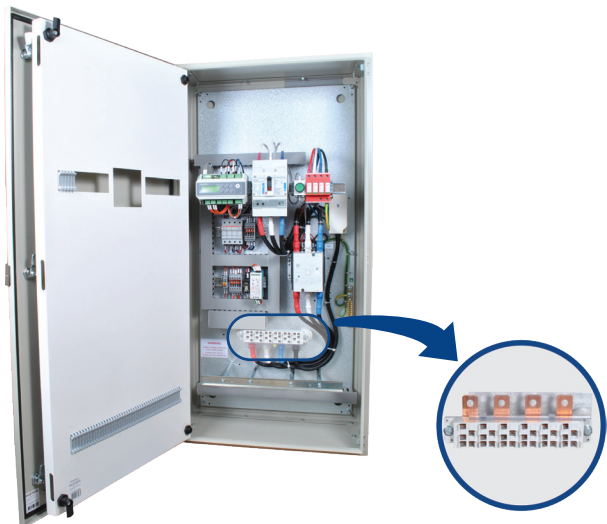


FULLY ASSEMBLED GRID PROTECTION SYSTEMS

With integrated combiner box section

MAINS-PRO-based assemblies

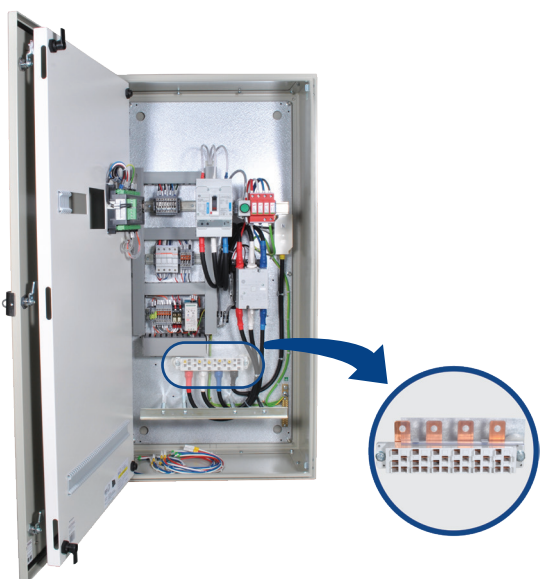
VOLTAGE BASED



Part Number	kVA	Current	Chassis Poles	Dimensions (HxWxD)
PVMGPS4P69AC18	69	100A AC1	18	1200 x 600 x 200
PVMGPS4P110AC18	110	160A AC1	18	1200 x 600 x 300
PVMGPS4P173AC18	173	250A AC1	18	1200 x 600 x 300

INTELIPROPV-based assemblies

CURRENT & VOLTAGE BASED



Export limitation and reverse power protection as standard.
Other communication options available (RS232 standard).

Part Number	kVA	Current	Chassis Poles	Dimensions (HxWxD)
PVIGPS4P69MAC18	69	100A AC1	18	1200 x 600 x 200
PVIGPS4P110MAC18	110	160A AC1	18	1200 x 600 x 300
PVIGPS4P173MAC18	173	250A AC1	18	1200 x 600 x 300

Features

All of the advantages of the standard based assemblies with the added benefit of the Auxiclic Busbar system.

6 x 3-ph+ N Busbar Auxiclic 250A .

IP20 finger safe.

Easy 'Click and Lock' connection. No screw tightening required.

Prewired to the Contactor.

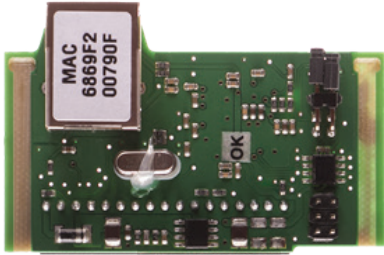
Variants with higher current ratings also available.

Technology partners :



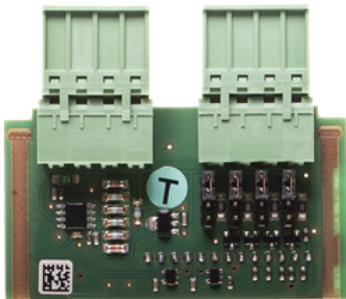
ACCESSORIES

IB-LITE



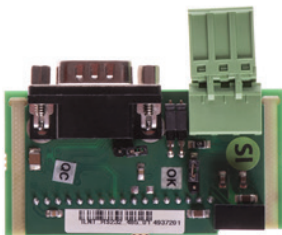
Plug-in communication module for IntelProPV controllers and their clones used with a standard firmware.

IL-NT-AIO



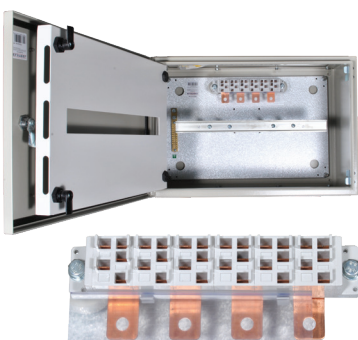
Extension plug-in module increasing the number of analog inputs and output of IntelProPV.
4 configurable analog inputs for the sensors (in range 0 - 2400 ohm; 0/4-20mA; 0-4VDC).

IL-NT-RS232-485



Extension plug-in module with RS232 AND RS485 INTERFACES (Dual Port). For use with IntelProPV

AC COMBINER BOXES



Modular enclosure for easy connection with standard grid protection systems.

IP65, RAL 7035 (Grey)

With and without Auxiclic Busbar system: 250A 3+N 18P Chassis 200mm & 300mm deep versions

Part Number	Description	Current Rating	Chassis Poles	Dimensions (HxWxD)
PVAC61	Including 18P chassis	250A	18	400 x 600 x 200
PVAC61-EB	DIN rail only	-	-	400 x 600 x 200
PVAC61-300	Including 18P chassis	250A	18	400 x 600 x 300
PVAC61-300EB	DIN rail only	-	-	400 x 600 x 300

How can we help you?



IPD has an extensive technical sales network of more than 70 employees nationally, backed by a national customer service centre to handle customer related inquiries . We provide added value to our customers through in-house design, estimating and local manufacturing. These services are further supported by a flexible in-house and on-site training program to better utilise our products.

Call 1300 556 601 for any inquiries

Scan QR code below with a smartphone to view further information



ComAp MainsPro relay in IPD's grid protection cubicle



How to programme Intelipro PV

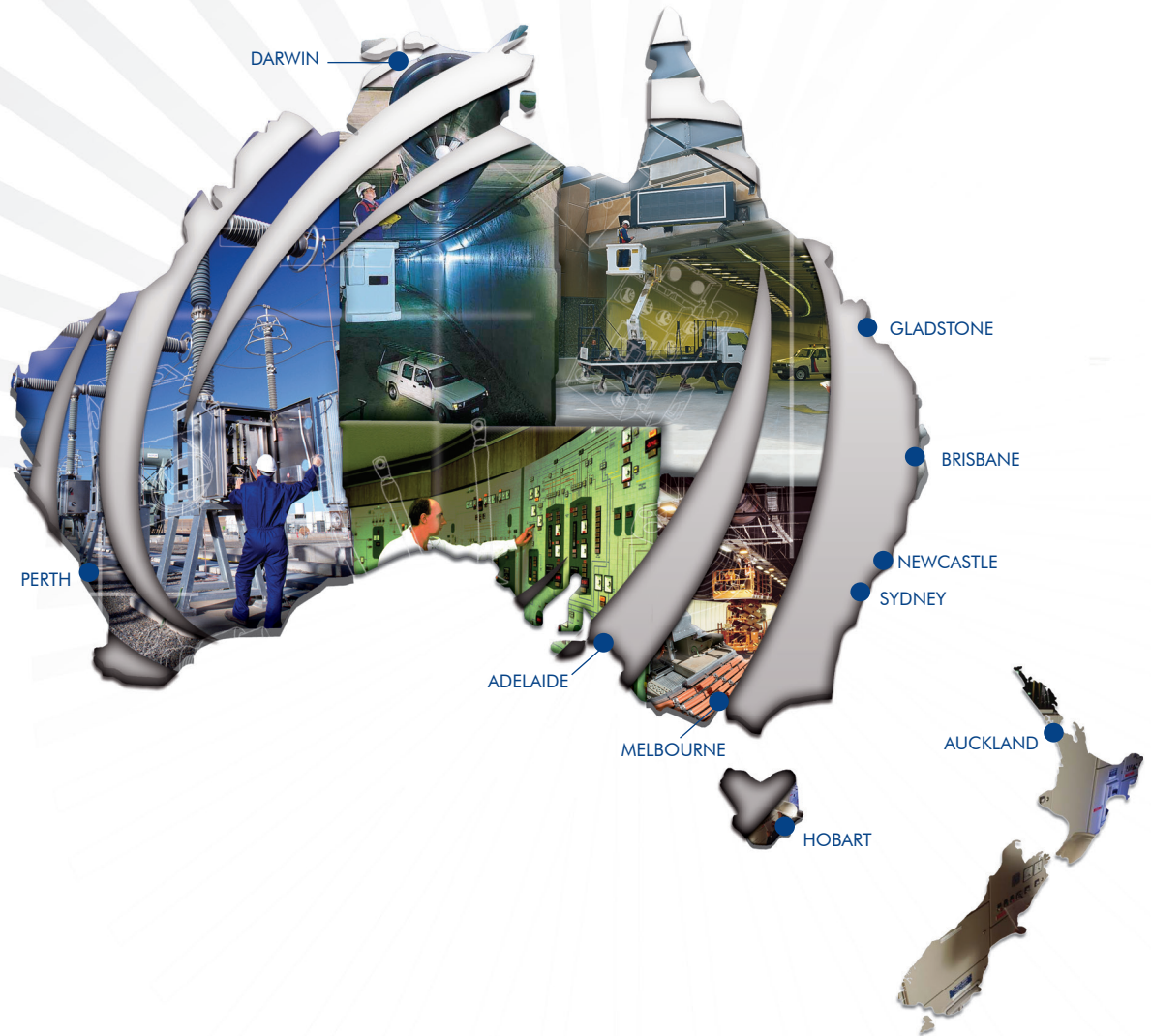


InteliproPV spec sheet



Mains protection spec sheet

Please visit www.ipd.com.au for drawings, dimensions and other related documentation.



QR Code
Scan the code above with
a smartphone to view the
full IPD product range



National Customer Support Centre
Tel: 1300 556 601 Fax: 1300 550 187
Email: customerservice@ipd.com.au
www.ipd.com.au



Quality
ISO 9001

