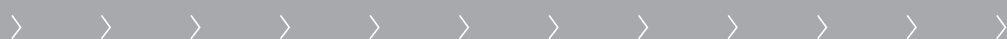




telergon
gorlan team

Switch - disconnectors

AC DC



gorlan
team

NEW
**SIMPLIFIED
QUICK CONNECT**



We present you the new **Switch - disconnectors S6000** whose main characteristic, thanks to its constructive design, is the very significantly reduction of physical connections in DC applications, allowing to achieve:

- › Less possibilities of wrong connections of DC links
- › Less power losses
- › No need of torque revision in DC links
- › Less labour costs in combiner box assemble
- › With visible breaking (under request)

The **Switch - disconnectors S6000** for AC application, are available specifically with housings of 2P, 3P or 3P+N.

Different accessories shot be, or must be, installed in any of these applications (particularly in DC installations).

- › Terminal shrouds
- › Phase barriers (to isolate the positive and negative poles adjacent)
- › Spacers (to increase the depth of the switch, to better adapt the different height depending on busbar system)

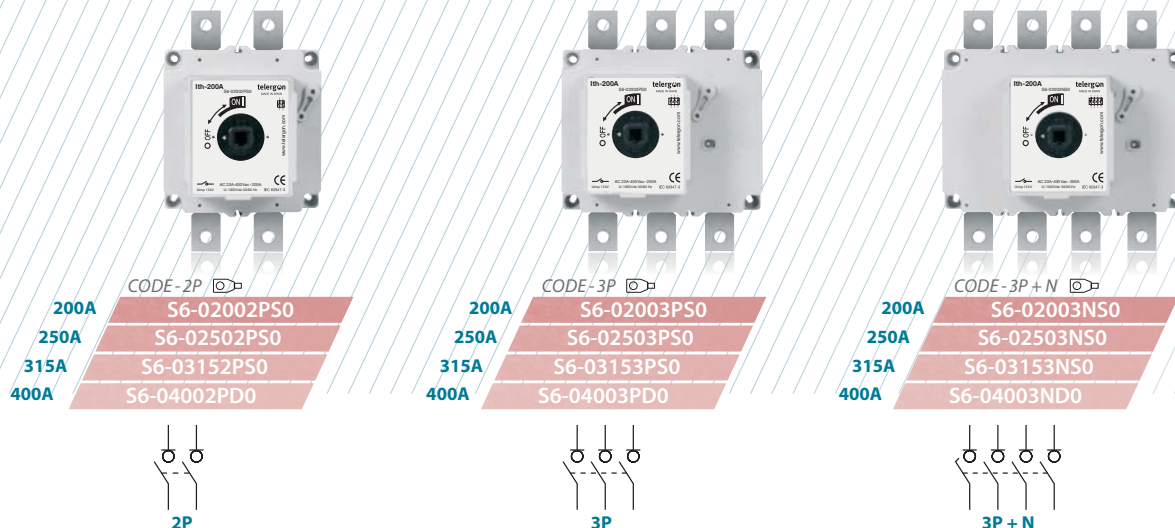
These accessories will be fixing with self tapping hardware.

S6000 AC Switch - disconnecter base mounting AC

According to IEC / EN 60947-3

Size 1

A 200 | 250 | 315 | 400



CODE-2P

200A	S6-02002PS0
250A	S6-02502PS0
315A	S6-03152PS0
400A	S6-04002PDD

CODE-3P

200A	S6-02003PS0
250A	S6-02503PS0
315A	S6-03153PS0
400A	S6-04003PDD

CODE-3P + N

200A	S6-02003NS0
250A	S6-02503NS0
315A	S6-03153NS0
400A	S6-04003NDD

Technical information



		200 250 315 400					
Rated thermal current	Ith	in ambient at 40° C	A	200	250	315	400
		in ambient at 50° C	A	200	250	315	400
		in ambient at 60° C	A	200	250	315	400
Rated insulation voltage (AC)	Ui		V	1000	1000	1000	1000
Rated dielectric strength		50 Hz, 1 min.	V	5000	5000	5000	5000
Rated impulse withstand voltage	Uimp		kV	12	12	12	12
AC rated operational current * ⁽¹⁾	Ie	230V AC21A	A	200	250	315	400
		230V AC22A	A	200	250	315	400
		230V AC23A	A	200	250	315	400
		400V AC21A	A	200	200	250	250
		400V AC22A	A	160	160	200	200
		400V AC23A	A	125	160	160	160
AC rated operational current * ⁽¹⁾	Ie	400V AC21A	A	200	250	315	400
		400V AC22A	A	200	250	315	400
		400V AC23A	A	200	250	315	400
AC rated operational power * ⁽²⁾	Pe	3x230V AC23A	kW	63,7	79,6	100,3	127,4
		3x400V AC23A	kW	110,8	138,5	174,5	221,7
		3x500V AC23A	kW	110,8	138,5	173,2	218,2

		200 250 315 400				
Rated capacitor power	400V, sen φ=0,65	kVAr	90	112,5	141,8	180,1
Rated breaking capacity	400V, cos φ=0,35-0,45	A	1600	2000	2520	3200
Rated making capacity	400V, cos φ=0,45	A	2000	2500	3150	4000
Short - circuit behaviour						
Short - circuit making capacity (peak value) * ⁽³⁾	Icm	kA	20	20	20	20
Short - time withstand current (1 sec)	Icw	kA rms	12	12	12	12
Number of mechanical operations		Cycles	20000	20000	20000	20000
Number of electrical operations	400V AC23	Cycles	1000	1000	1000	1000

*⁽¹⁾ Other voltages and/or utilization categories: please consult us

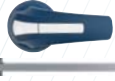
*⁽²⁾ Indicative values, value cos φ = 0,8

*⁽³⁾ Without limiting protective device (short - circuit maintained 50... 100 ms)

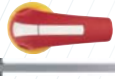
Accessories



» Direct handle
CODE DS-SI11



» Panel handle
CODE DS-SA11
shaft included ^{*(4)}



» Emergency handle
CODE DS-SR11
shaft included ^{*(4)}



» Panel handle
CÓDIGO DS-SA14
shaftless



» Auxiliary contacts
1NA+1NC CODE D5LAU01
2NA+2NC CODE D5LAU02

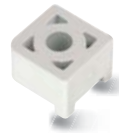
le = 16 A (resistive loads)
4 A (inductive loads) at 250 Vac



» Terminal shrouds
2P CODE DR-CU11 (1 unit)
3P CODE DR-CU12 (1 unit)
3P+N CODE DR-CU13 (1 unit)



» Phase barriers
2P CODE DR-SF11 (1 unit)
3P CODE DR-SF12 (2 units)
3P+N CODE DR-SF13 (3 units)

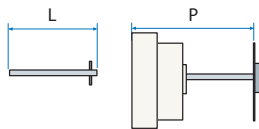


» Spacers
CODE DR-EL11 (4 units)



» Safety key lock device
Simple CODE DS-CA11
Double CODE DS-CE11

For external handle, lock the handle by means of a key in position "OFF" (under request, in "ON"), the key can only be removed with the handle locked

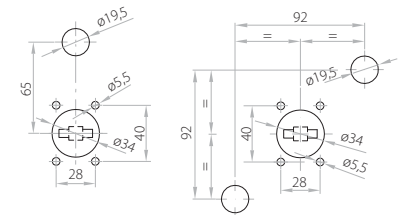


^{*(4)} Standard shaft included

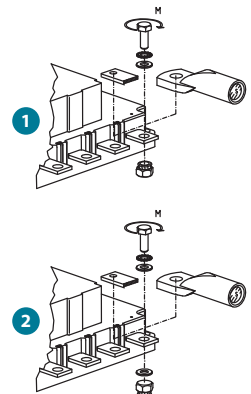
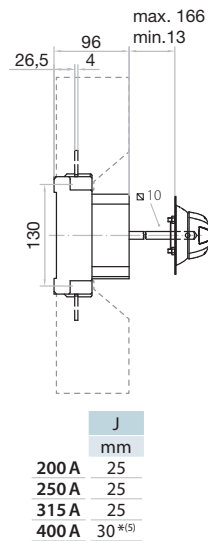
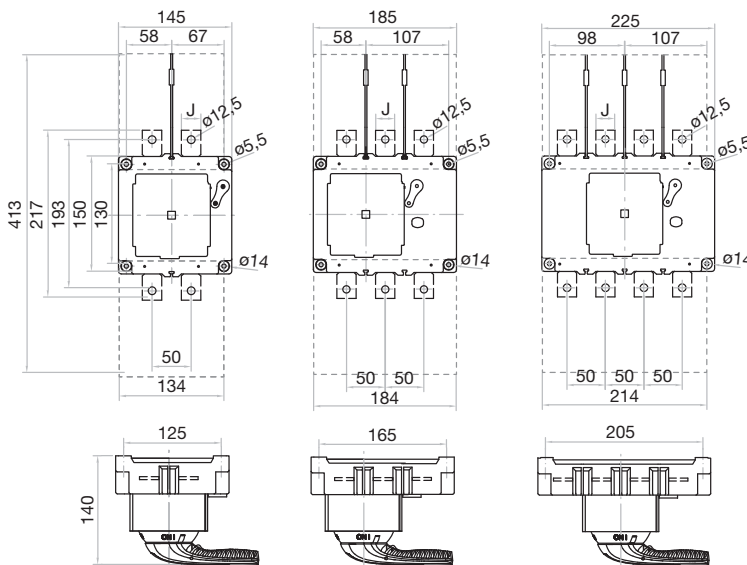
Shaft extensions

Type 0		Type 1			Type 2		
L (mm)	P (mm)	Code	L (mm)	P (mm)	Code	L (mm)	P (mm)
227	103... 256	DS-EP14	375	103... 415	DS-EP15	536	103... 576

Panel drilling for handle and keylock device
simple double



Dimensions (mm)



J (mm)	S max (Cu) (mm ²)	H max (Cu) (mm)	L max (Cu) (mm)	T (mm)	M (Nxm)
200 A	25	120	7	25	M10 18
250 A	25	150	7	25	M10 18
315 A	25	185	7	25	M10 18
400 A	30 ^{*(5)}	240 ^{*(5)}	7	35 ^{*(5)}	M10 18

^{*(5)} To use phase barriers to maintain clearance distance

2P 3P 3P+N

S6000 DC Switch - disconnecter base mounting DC

According to IEC / EN 60947-3

Size 1

A 125 | 160 | 200 | 250 | 315 | 400



CODE-500Vdc

125A	S6-0125_S0
160A	S6-0160_S0
200A	S6-0200_S0
250A	S6-0250_S0
315A	S6-0315_S0
400A	S6-0400_D0



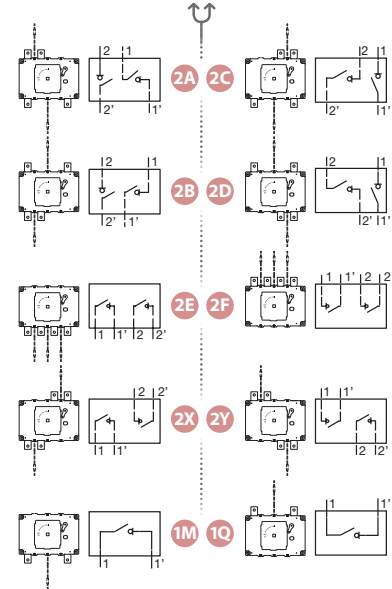
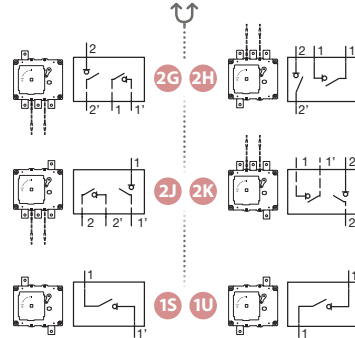
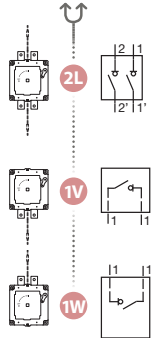
CODE-750Vdc

125A	S6-0125_S0
160A	S6-0160_S0
200A	S6-0200_S0
250A	S6-0250_S0
315A	S6-0315_S0
400A	S6-0400_D0



CODE-1000Vdc

125A	S6-0125_S0
160A	S6-0160_S0
200A	S6-0200_S0
250A	S6-0250_S0
315A	S6-0315_S0
400A	S6-0400_D0



Technical information



		125	160	200	250	315	400
Rated thermal current	I _{th} in ambient 40°C	A 125	160	200	250	315	400
	to 50°C	A 125	160	200	250	315	400
	60°C	A 125	160	200	250	315	400
Rated insulation voltage (DC)	U _i	V 1500	1500	1500	1500	1500	1500
Rated dielectric strength	50 Hz, 1 min.	V 5000	5000	5000	5000	5000	5000
Rated impulse withstand voltage	U _{imp}	kV 12	12	12	12	12	12
Rated operational current ^{*(1)}	I _e Code 500Vdc	DC21B A 125	160	200	250	315	400
	Code 750Vdc	A 125	160	200	250	315	400
	Code 1000Vdc	A 125	160	200	250	315	400
Rated breaking and making capacity	Code 500Vdc	DC21 500V 125	DC21 500V 160	DC21 500V 200	DC21 500V 250	DC21 500V 315	DC21 500V 400
	Code 750Vdc	DC21 750V 125	DC21 750V 160	DC21 750V 200	DC21 750V 250	DC21 750V 315	DC21 750V 400
	Code 1000Vdc	DC21 1000V 125	DC21 1000V 160	DC21 1000V 200	DC21 1000V 250	DC21 1000V 315	DC21 1000V 400

testing: **AIT** AUSTRIAN INSTITUTE OF TECHNOLOGY TOMORROW TODAY

		125	160	200	250	315	400
Short - circuit behaviour							
Short - circuit making capacity (peak value) ^{*(2)}	I _{cm} kA	10	10	10	10	10	10
Short - time withstand current (1 sec)	I _{cw} kA rms	10	10	10	10	10	10
Number of mechanical operations ^{*(3)}	Cycles	20000	20000	20000	20000	20000	20000
Number of electrical operations	DC21B Cycles	200	200	200	200	200	200

^{*(1)} Other voltages and/or utilization categories: please consult us

^{*(2)} Without limiting protective device (short - circuit maintained 50... 100 ms)

^{*(3)} Please consult us for more operations

Accessories



» Direct handle
CODE DS-SI1



» Panel handle
CODE DS-SA11
shaft included ^{*(4)}



» Emergency handle
CODE DS-SR11
shaft included ^{*(4)}



» Panel handle
CÓDIGO DS-SA14
shaftless



» Auxiliary contacts
1NA+1NC CODE D5LAU01
2NA+2NC CODE D5LAU02

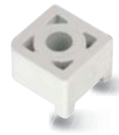
I_e = 16 A (resistive loads)
4 A (inductive loads) at 250 Vac



» Terminal shrouds
CODE DR-CU11 (1 unit)
CODE DR-CU12 (2 units)
CODE DR-CU13 (3 units)



» Phase barriers
CODE DR-SF11 (1 unit)
CODE DR-SF12 (2 units)
CODE DR-SF13 (3 units)

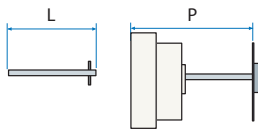


» Spacers
CODE DR-EL11 (4 units)



» Safety key lock device
Simple CODE DS-CA11
Double CODE DS-CE11

For external handle, lock the handle by means of a key in position "OFF" (under request, in "ON"), the key can only be removed with the handle locked

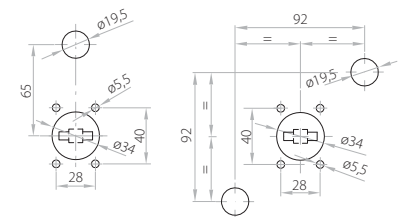


^{*(4)} Standard shaft included

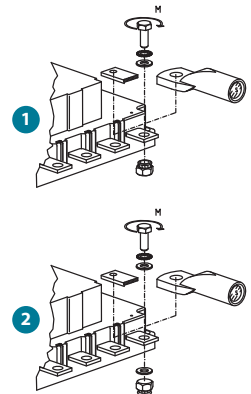
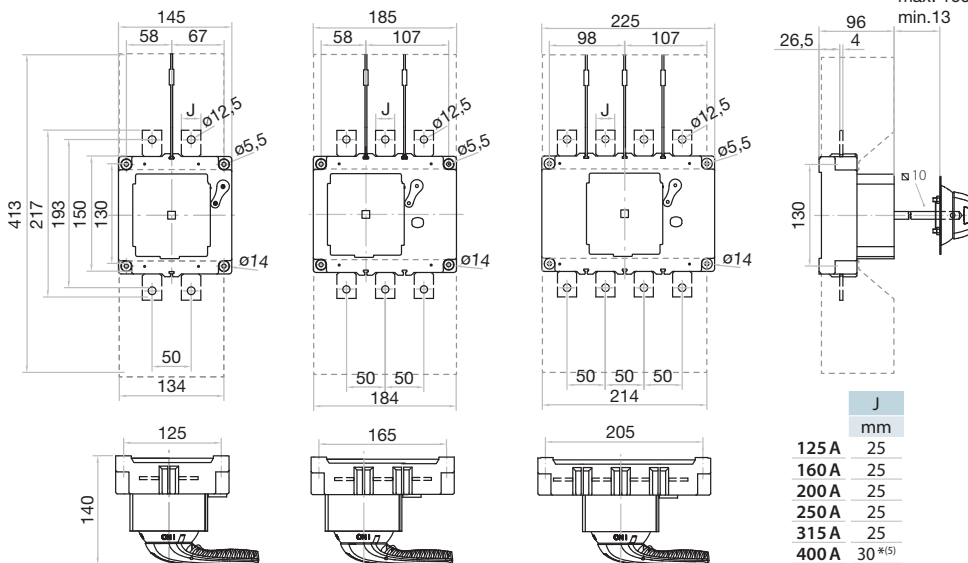
Shaft extensions

Type 0		Type 1			Type 2		
L (mm)	P (mm)	Code	L (mm)	P (mm)	Code	L (mm)	P (mm)
227	103... 256	DS-EP14	375	103... 415	DS-EP15	536	103... 576

Panel drilling for handle and keylock device
Simple Double



Dimensions (mm)



S max (Cu) mm ²	H max (Cu) mm	L max (Cu) mm	T	M
125 A	95	5	25	M10 18
160 A	95	5	25	M10 18
200 A	120	7	25	M10 18
250 A	150	7	25	M10 18
315 A	185	7	25	M10 18
400 A	240 ^{*(5)}	7	35 ^{*(6)}	M10 18

^{*(5)} To use phase barriers to maintain clearance distance

MAINTENANCE RECOMMENDATIONS:

Electrical installations as well as their components, are strongly recommended to be checked periodically in order to ensure its proper functioning and maneuverability, and also to detect possible damage due to accidents and wear for use or aging. It is important to make sure household wiring is up-to-date, because of the vibrations provoked by electricity, it may happen that the wiring is loosened over time, thereby adversely affecting the performance and durability of the components like the installation itself.

Neglecting this can not only cause damage or breakage of the components, installations, machinery, and so on, it might also cause accidents and harm to the people.

Before proceeding to work on installations or components in which is or could be (come) present the electricity, operators, users and/or anybody involved must observe safety precautions, using necessary features to ensure personal safety (appropriate work clothes, goggles, helmet, gloves, insulated shoes, and so on). Proper tools must be used for each specific work, also implementing restrictive measures and necessary signaling for other people (warning signs, barriers, mechanical locks, prevent access, and so on). Prior to the use of these elements, it's necessary to check its perfect conditions, while ensuring that they meet optimal conditions to fulfill their mission (clothes without wear or breakage, tools with their isolation conditions, and so on).

For these reasons electricity-related works must be carried out in absence of electricity, in both the area and the affected elements according to the rules applicable to each situation. These works should only be carried out by authorized and qualified professionals who are aware of the potential hazards.

Telergon, S.A.U. reserves the right to modify the products herein illustrated without prior notice. Technical data and description in the catalogue are accurate at the printing date, but no liabilities for errors or omissions are accepted. No danger or hazard to health and safety will be caused when products are installed, maintained and used in applications for which it is designed, in accordance with "professional practices" and manufacturer's instructions.

Products supplied by TELERGON are warranted for a period of 2 years against any manufacturing defect. TELERGON's guarantee is limited to the repair or replacement of the defective goods in the shortest possible time. This warranty does not cover the abuse or improper use by the user according to the technical instructions included in the sale by TELERGON, according to the current legislation, or their tampering or misuse. This warranty does not reach in any way third parties, being only applicable to the Customer.



> **pronutec GmbH** >
gorian team

Pronutec GMBH
Tiefenbroicher Weg, 35
Halle A4
40472 Düsseldorf / Deutschland

> Tel.: +49 0211 302 1915
Fax: +49 0211 303 3209

> E-mail: info@pronutec.com >
www.pronutec.com >